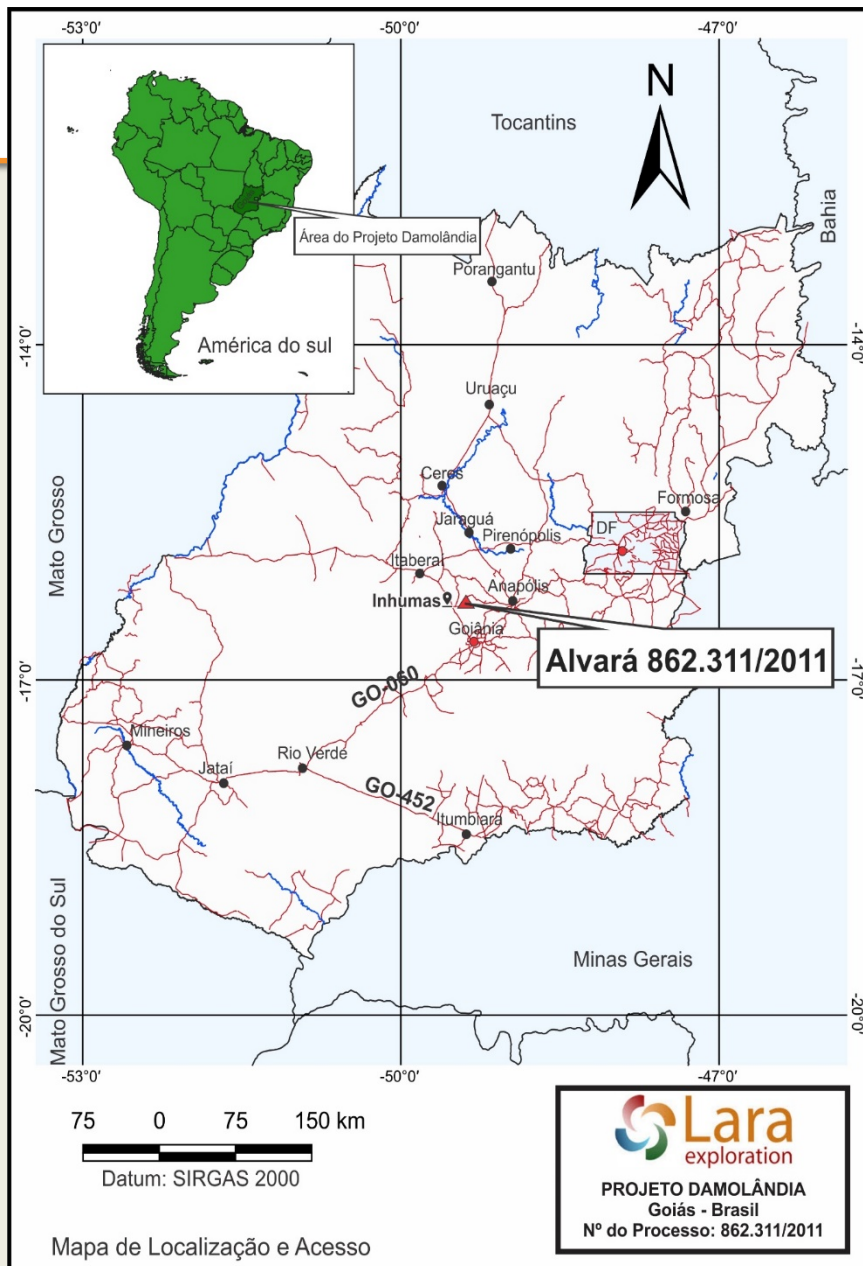


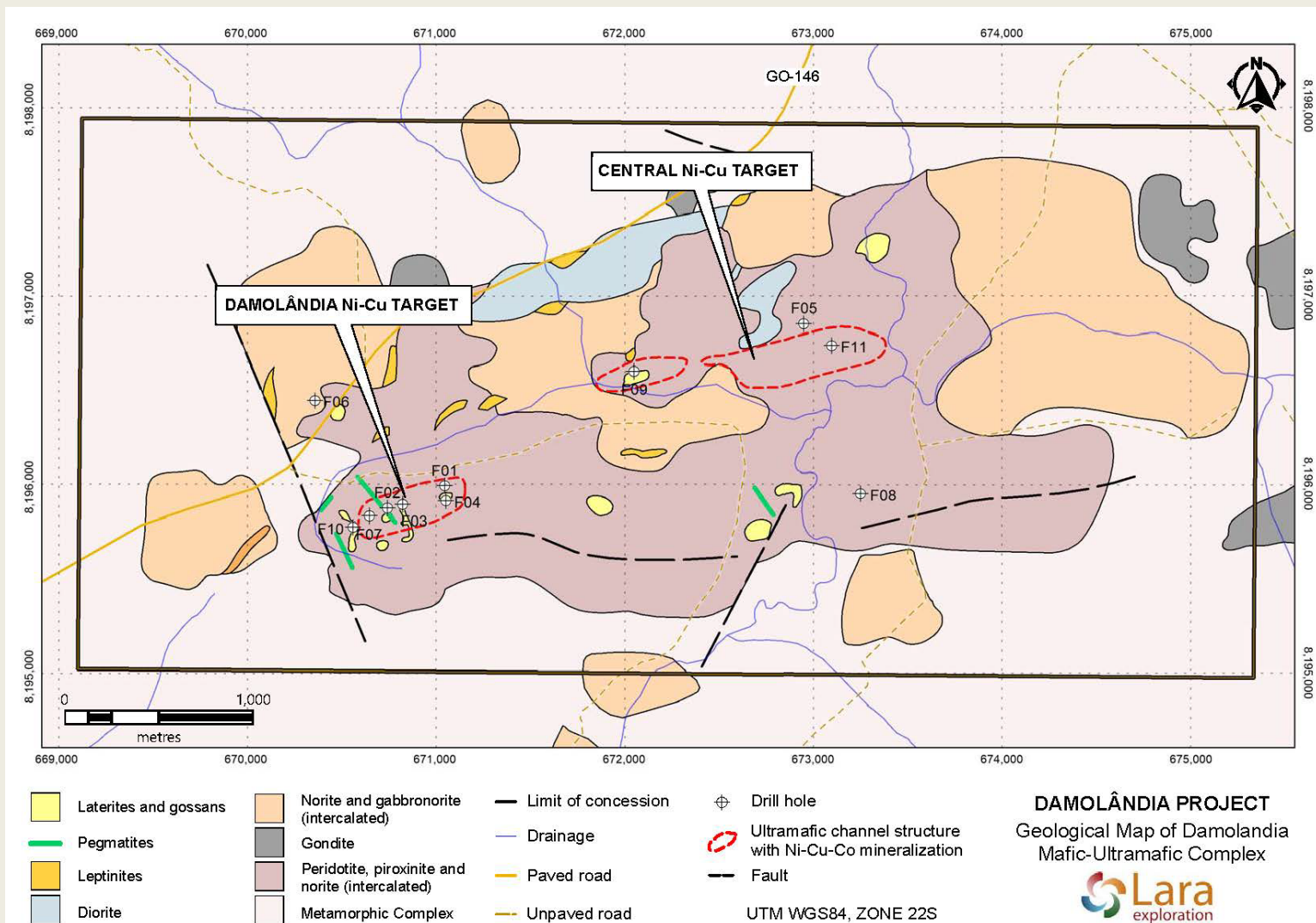


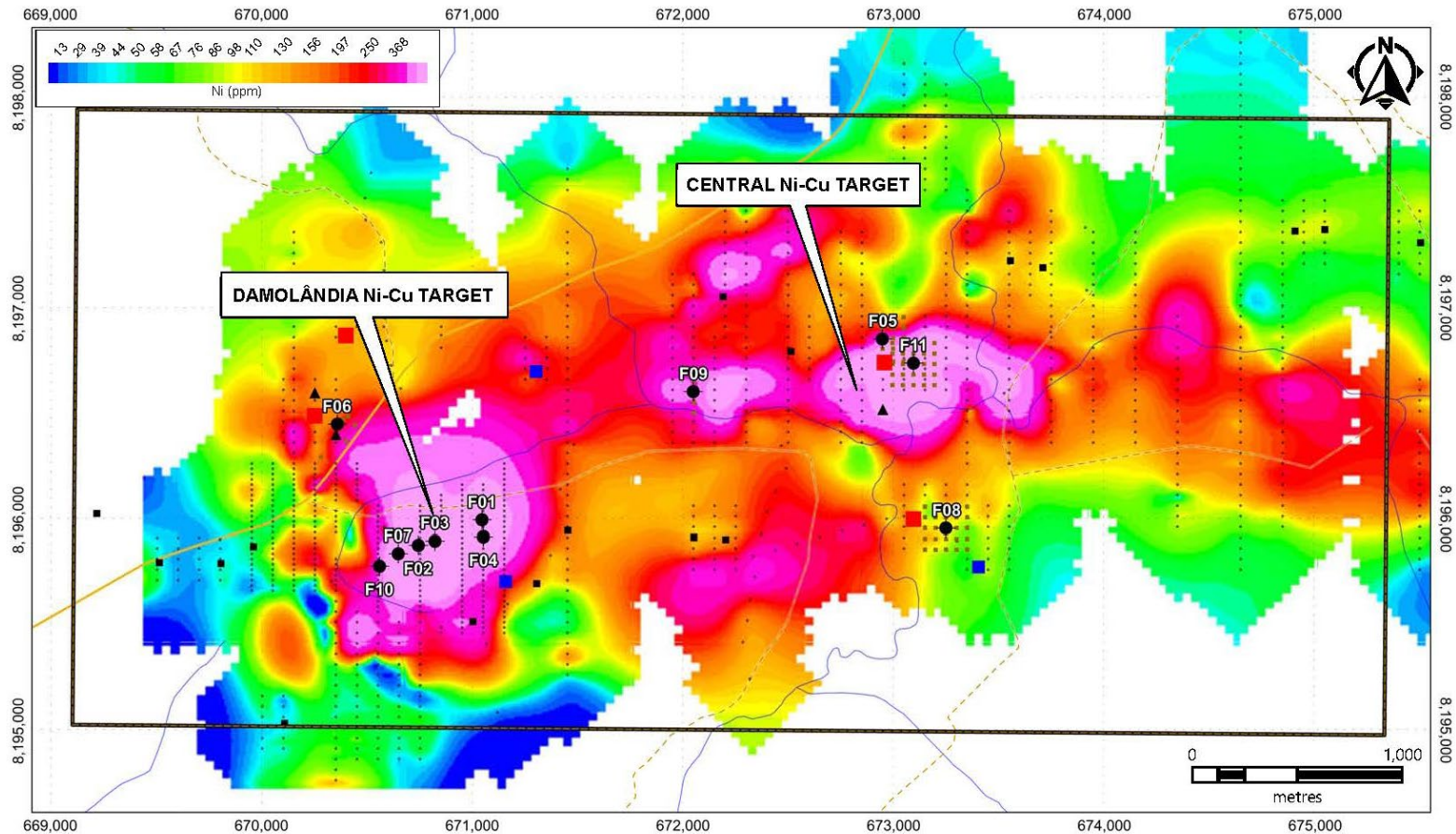
Lara
exploration



DAMOLANDIA NICKEL PROJECT, BRAZIL







IP Anomaly

▲ Strong

▲ Moderate

▲ Weak

VTEM Anomaly

■ Well defined

■ Reasonable defined

■ Poorly defined

— Limit of concessions

— Drainage

— Paved road

— Unpaved road

◆ Drill hole

• Soil sample

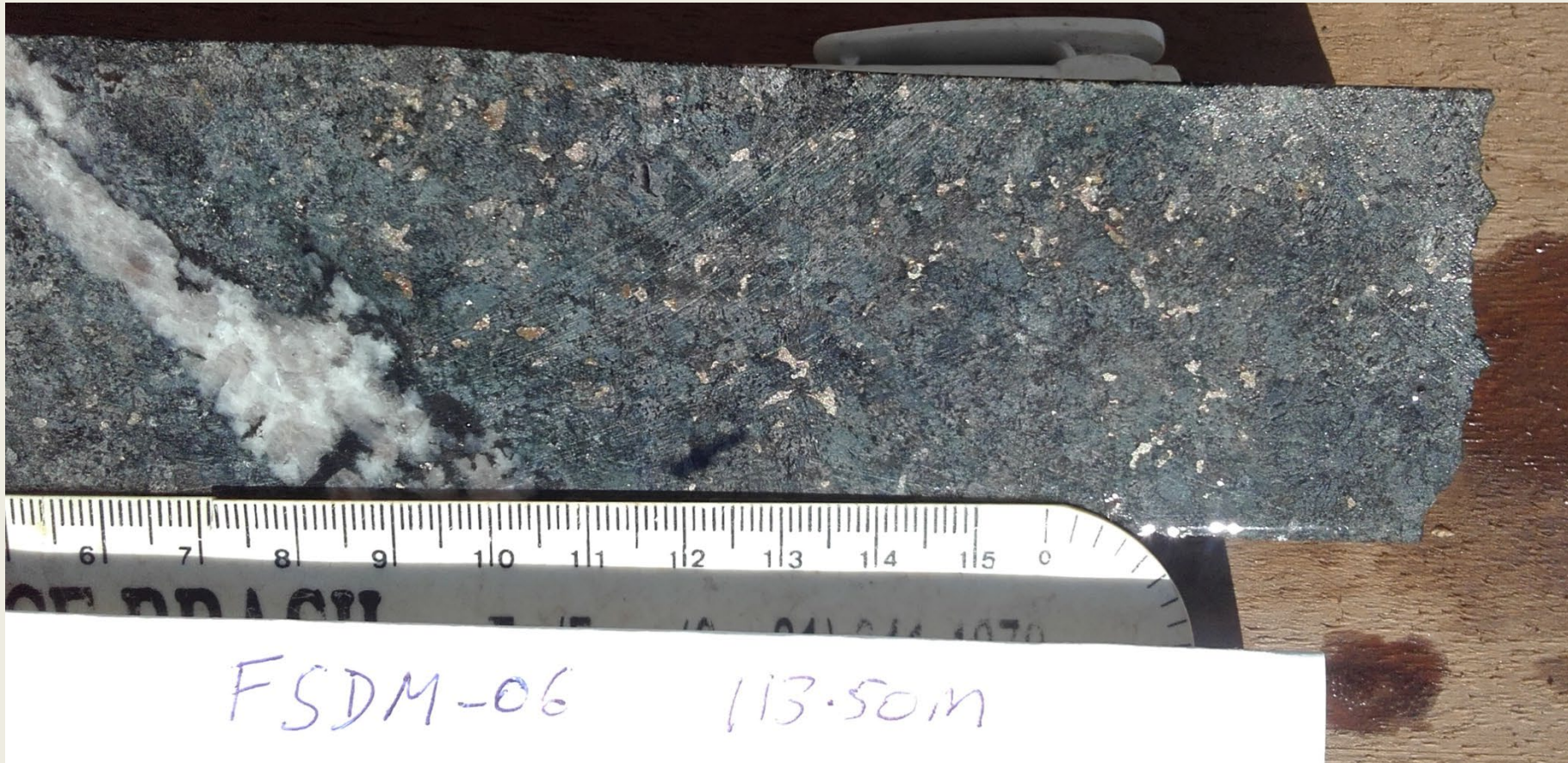
DAMOLÂNDIA NICKEL TARGET

Soil Nickel Anomalies

UTM WGS84, ZONE 22S



Hole FSDM-07. Peridotite with coarse sulphide aggregates from 135.4m



Hole FSDM-06. Pyroxenite with disseminated sulphides from 113.50m



Peridotite with rounded blebs of sulphide



Hole FSDM-06. Pyroxenite with sulphide veinlets and stringers 115m



Hole FSDM-03: Pyroxenite with pyrrhotite-rich sulphide vein (with lesser amounts of pentlandite and minor chalcopyrite from 122.8 m.

For more information please contact:

Christopher MacIntyre

Vice President, Corporate Development

Suite 414, 100 Richmond Street West

Toronto, Ontario M5H 3K6, Canada

Phone: +1 416-703-0010

Fax: +1 416-964-0823

Michael Bennell, Lara's Vice President Exploration and a Fellow of the Australasian Institute of Mining and Metallurgy (AusIMM), is a Qualified Person as defined by National Instrument 43-101 Standards of Disclosure for Mineral Projects and has approved the technical disclosure and verified the technical information in this presentation.